

# Montefiore Update

January 4, 2016 KEEPING ASSOCIATES IN THE KNOW

## Montefiore's Fine Art Program and Collection Celebrates One-Year Anniversary

Founded in 2014, the Montefiore Fine Art Program and Collection is an innovative visual arts program that enhances and supports the restorative environment in service of Montefiore's patients, their families and Montefiore associates. To commemorate its first anniversary, the Fine Art Program celebrated with the installation of *Ascension Leaves*, a kinetic suspended sculpture consisting of 5,600 dried and hand-dyed leaves, located in the East 210th Street Lobby of the Moses Campus. The sculpture, created by New York artist Miya Ando, expresses the connection of leaves to the human condition. "We are all unique individuals,

fragile in our health and physicality, but strong and resilient and part of the larger community, just like the leaves on a tree," says Ms. Ando.

The Fine Art Program also launched a new rotating gallery adjacent to the Tishman Learning Center entitled *Spotlight on Montefiore*. Upcoming themes to be highlighted include: Montefiore's history, departmental milestones and contributions to medical research. The current installation, *Montefiore-Einstein: An Extraordinary Partnership* celebrates the past and present relationship between the institutions. The exhibition was curated in collaboration with The Harry M. Zimmerman, MD, Archives at Montefiore and the D.

Samuel Gottesman Library, Albert Einstein College of Medicine. The Fine Art Program will curate three exhibitions per year in this gallery, located across from the Grand Hall.

"Montefiore has, since its inception in the late 1800s, always been innovative and forward thinking," said Rachelle Sanders, Vice

President and Chief Development Officer, Montefiore. "This extraordinary program brings unexpected light, color, soothing imagery, creativity and connectivity to an environment that is sometimes stressed. I am deeply proud of our Fine Art team and of what they have accomplished in just one year. The installations and programs have been transformative for our patients, their families, associates and visitors alike. We couldn't be happier to expand our Montefiore community to include artists right here in the Bronx and beyond."

The Fine Art Program and Collection continues to develop as it moves into its second year. New initiatives include the integration of video art and interactive apps. Visit the Montefiore Fine Art Program and Collection website for additional information: [www.montefiore.org/artprogram](http://www.montefiore.org/artprogram).



Miya Ando. *Ascension Leaves*. 2015. Moses Lobby.



*Montefiore-Einstein: An Extraordinary Partnership*. Tishman Learning Center. Photo: Adi Talwar

## Montefiore and Einstein Announce New Chair of Medicine

Yaron Tomer, MD, a leading endocrinology researcher and clinician, has been named professor and university chair of the Department of Medicine at Montefiore and Einstein. Dr. Tomer, who is joining Montefiore-Einstein from the Icahn School of Medicine at Mount Sinai, will assume his position on March 1, 2016.

Dr. Tomer is a world-renowned researcher with a robust, NIH-funded laboratory. His research team has focused on the immunogenetic, epigenetic and environmental mechanisms causing thyroid autoimmunity and type 1 diabetes. "Dr. Tomer is an exceptional clinician and endocrine researcher. We look forward to him joining us and continuing to advance the research activities and high quality care provided in our largest clinical department," says Philip. O. Ozuah, MD, PhD, Chief Operating Officer, Montefiore.



## Extensive Preparation is Key to Patient Safety and Epic@Montefiore Go-Live Success

Preparation for the fourth go-live of Epic@Montefiore at Montefiore's Einstein, Hutchinson and Westchester Square campuses, as well as all outpatient radiology sites, is in underway. About 4,000 associates are currently being trained and 2,065 end user devices are being configured to ensure a smooth go-live.

With patient safety a top priority, Montefiore Subject Matter Experts and the Epic@Montefiore project team have created clinical applications and workflows to be patient-centric—including incorporating computerized clinical decision support tools that enable the safest possible care for Montefiore patients.

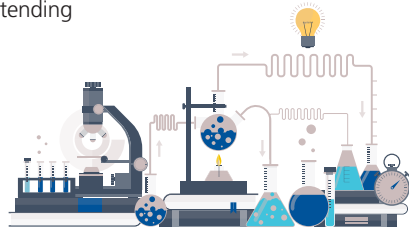
To further ensure patient safety, Epic @Montefiore project team members have shadowed clinicians in surgical areas to observe real-life activity in operating rooms, and toured emergency departments alongside providers on their patient rounds to make certain that all aspects required for clinicians to perform their workflows are thoroughly addressed, ensuring efficiency during the go-live and beyond.

**For more information about Epic@Montefiore, visit the intranet.**

EPIC@Montefiore

## Research & Innovations

- A research team at Montefiore and Einstein led by **Alain Litwin, MD, MPH**, Attending Physician, Internal Medicine and Addiction Medicine, Montefiore, and Professor, General Internal Medicine and Psychiatry and Behavioral Sciences, Einstein, was awarded \$14 million by the Patient-Centered Outcomes Research Institute (PCORI) to determine how best to treat hepatitis C among people who inject drugs (PWID).
- **Richard Lipton, MD**, Director, Montefiore Headache Center; Edwin S. Lowe Chair in Neurology; Vice Chair and Professor, The Saul R. Korey Department of Neurology; Professor, Psychiatry and Behavioral Sciences and Epidemiology & Population Health, Einstein, was the senior author of a new study which found that individuals who experienced high levels of stress were more than twice as likely to become mentally impaired by Alzheimer's related dementias as those who were not. Because stress is treatable, the results suggest that detecting and treating stress in elderly patients might help delay or even prevent the onset of Alzheimer's. The findings were published online in *Alzheimer Disease & Associated Disorders*.
- On December 5, Investigators at **Montefiore Einstein Center for Cancer Care (MECCC)**, Einstein's NCI-designated **Albert Einstein Cancer Center** and the **Children's Hospital at Montefiore** presented their research findings at the American Society of Hematology's (ASH) 57th Annual Meeting and Exposition in Orlando, Florida. Presentations included the first report on a genetic risk factor for avascular necrosis associated with treatment of acute lymphoblastic leukemia (ALL) in children, along with new insights into the molecular basis for acute myeloid leukemia (AML) and a novel approach to the treatment of this disease.
- The Avon Foundation for Women has awarded Montefiore and Einstein pathology researchers **Rachel Hazan, PhD**, Professor, Pathology, Einstein, and **Susan Fineberg, MD**, Attending Physician, Pathology, Montefiore and Associate Professor, Clinical Pathology, Einstein, a \$300,000 grant to facilitate their collaborative research study of triple negative breast cancer in primary tumors, as well as in the metastatic setting.



## Clinical Trial Spotlight

### Research Study for Latina Breast Cancer Survivors

Researchers at Montefiore need your help to investigate whether new educational material will help promote follow-up care in Latina breast cancer survivors.

To take part you must:

- Be 21–74 years of age
- Identify yourself as a Latina or Hispanic
- Have completed primary treatment 3–48 months ago

Participants will be compensated for their time.

To learn more, contact Rita Rivera at 646-627-6972 or [rita.rivera@einstein.yu.edu](mailto:rita.rivera@einstein.yu.edu).

To search for other clinical studies being conducted at Montefiore, visit [www.montefiore.org/clinicaltrials](http://www.montefiore.org/clinicaltrials).

## B.O.L.D. Buddy Program to Expand with Komen Grant

**The Bronx Oncology Living Daily (B.O.L.D.) Program**, offered through the Montefiore Einstein Center for Cancer Care, provides psychosocial services to enhance the physical, emotional and spiritual health of people with cancer. An important component of the program is the B.O.L.D. Buddy Peer Navigation Program, which matches cancer patients with a cancer survivor “buddy” to offer compassionate peer support, phone check-ins, treatment companionship and treatment adherence coaching.

Due to the success of the B.O.L.D. Buddy program, Alyson Moadel-Robblee, PhD, Director, Psychosocial Oncology Program, Albert Einstein Cancer Center, and her colleagues received a \$200,000 grant from the Susan G. Komen Foundation to expand the program to include B.O.L.D. Breast Screening Companions. Program volunteers provide support to women who need breast cancer screening, particularly those facing emotional or social barriers such as fear, avoidance, misinformation and/or difficulty getting transport to mammogram or biopsy appointments.

“Going for a mammogram can be very scary. Being called back for additional screening after an abnormal finding can cause patients to feel panic, confusion and anxiety, and also raises a slew of daunting questions,” said Dr. Moadel-Robblee. “Having a Buddy to accompany women and men through the process of cancer care from screening to treatment, can provide tremendous comfort and support towards promoting early and optimal outcomes.”

To learn more about the B.O.L.D. Program, its services and volunteer opportunities, email [cancersupport@einstein.yu.edu](mailto:cancersupport@einstein.yu.edu) or call 718-430-2200.

## 2016 Automobile Mileage Rate Decrease

As of January 11, 2016, the standard mileage reimbursement rate for the medical center will decrease from 57.5 cents to 54.0 cents per mile. This new standard applies only to those miles traveled for Montefiore business purposes that have been approved in advance by the associate's supervisor. Reimbursement for automobile mileage expenses can be claimed on the **Employee Business Expense Travel Reimbursement Form**, which can be found on the intranet.

## EVENTS

### Interdisciplinary Health Care Project Presentations by HERO High Students

Join us as 9th grade students present their research and action plans on chronic disease management and prevention, 10th grade students present the results of program evaluations of partner initiatives and 11th grade students present their career plans.

**Friday, January 15 | 12:30–2:30 pm**

**HERO High**

**The Samuel Gompers Campus**

**455 Southern Boulevard, Bronx**

Please enter from the north entrance on Tinton Avenue.

RSVP to Dana Politis at [dpolitis@montefiore.org](mailto:dpolitis@montefiore.org) or 718-920-6212.

Published by the Department of Marketing and Communications. Please email story ideas to the Department of Marketing and Communications at [update@montefiore.org](mailto:update@montefiore.org). *Update* is produced for Montefiore associates to keep them updated on Montefiore news, events, clinical innovations, research and recognitions.

Like us on Facebook at [facebook.com/MontefioreMedicalCenter](https://facebook.com/MontefioreMedicalCenter)  
Follow us on Twitter at [twitter.com/montefioreny](https://twitter.com/montefioreny)  
Connect with us on LinkedIn at [linkedin.com/company/montefiore-medical-center](https://linkedin.com/company/montefiore-medical-center)  
Watch us on youtube.com/MontefioreMedCenter  
Join the conversation on Yammer.com



**Montefiore**  
Inspired Medicine